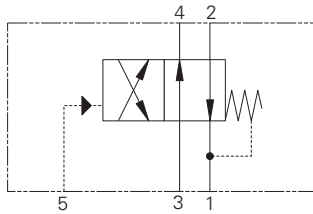


PTS16-10 - Pilot to Shift Valve

Remote pilot operated, directional control valve
23 L/min (6 USgpm) • 350 bar (5000 psi)



Operation

This valve allows flow between ports 1 and 2 and ports 3 and 4 until sufficient pressure has been applied at port 5 and the spring bias is overcome.

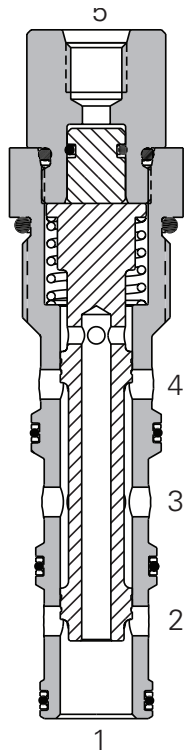
At that time, flow is directed between ports 1 and 4 and ports 3 and 2. During the cross-over transition, all ports are blocked. The spring chamber for this valve is vented internally to port 1.

Features

Hardened, ground and honed sleeve and spool for low internal leakage. Working pressure 350 bar.

Sectional View

D



Performance Data

Ratings and Specifications

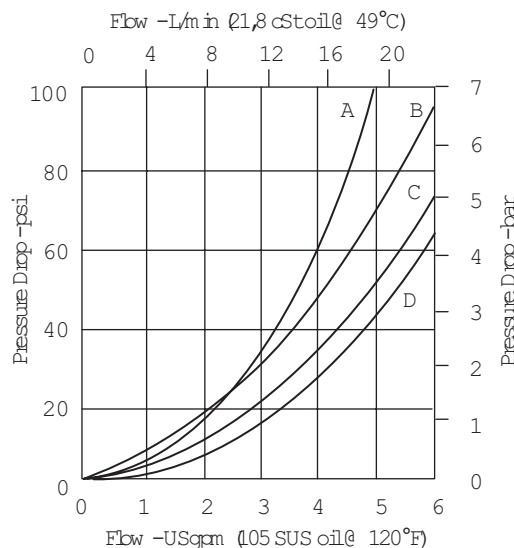
Performance data is typical with fluid at 21,8 cSt (105 SUS) and 49°C (120°F)

Typical application pressure (all ports)	350 bar (5000 psi)
Cartridge fatigue pressure (infinite life)	350 bar (5000 psi)
Rated flow	23 L/min (6 USgpm)
Internal leakage	210 cc/min (13 in ³ /min) @ 350 bar (5000 psi)
Temperature range	-40° to 120°C (-40° to 248°F)
Pilot pressures	4,2 bar (60 psi)
Pilot displacement volume	0,49 cm ³ (0.02 in ³)
Cavity	C-10-4
Fluids	All general purpose hydraulic fluids such as: MIL-H-5606, SAE 10, SAE 20, etc.
Filtration	Cleanliness code 18/16/13
Standard housing materials	Aluminum or Steel
Weight cartridge only	0,5 kg (0.55 lbs)
Seal kit	889625 (Buna-N), 566080 (Viton®)

Viton is a registered trademark of E.I. DuPont

Pressure Drop Curves

Cartridge only



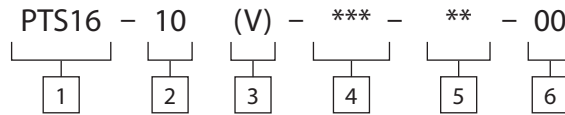
Description

Where measurements are critical request certified drawings. We reserve the right to change specifications without notice.

PTS16-10 - Pilot to Shift Valve

Remote pilot operated, directional control valve
23 L/min (6 USgpm) • 350 bar (5000 psi)

Model Code



1 Function
PTS16 - Pilot to shift valve

2 Size
10 - 10 size

3 Seal Material
Blank - Buna-N
V - Viton®

4 Port Size

Code	Port Size	Housing Number		
		Aluminum Light Duty	Aluminum Fatigue Rated	Steel
0	Cartridge			
A3B	3/8" BSPP	02-179705	-	-
A6T	SAE 6	566161	-	-
A2G	1/4" BSPP	-	876709	-
A3G	3/8" BSPP	-	876715	-
A6H	SAE 6	-	876708	-
A8H	SAE 8	-	876713	-
S2G	1/4" BSPP	-	-	02-175139
S3G	3/8" BSPP	-	-	02-175140
S6T	SAE 6	-	-	02-175137
S8T	SAE 8	-	-	02-175138

See section J for housing details.

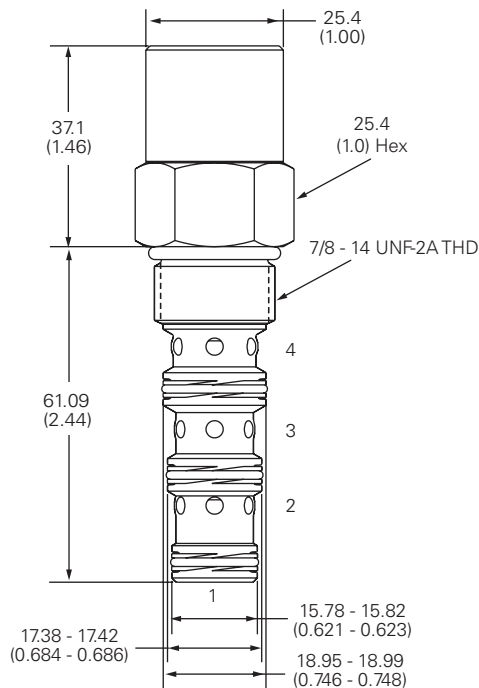
5 Pilot to shift (nominal)
60 - 4,2 bar (60 psi)

6 Special Features
00 - None
(Only required if valve has special features, omitted if "00")

Dimensions

mm (inch)

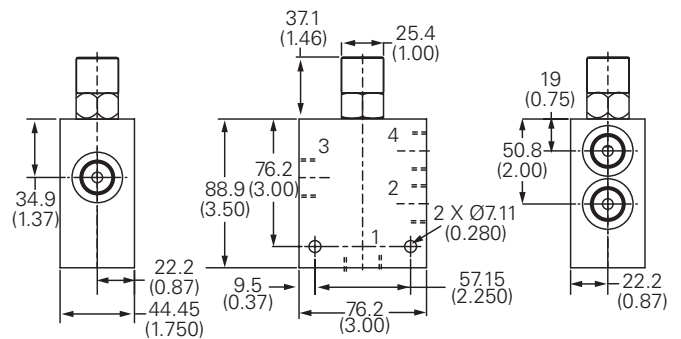
Cartridge Only



Torque cartridge in aluminum housing
47-75 Nm (35-40 ft lbs)

Torque cartridge in steel housing 68-75 Nm
(50-55 ft lbs)

Installation Drawing (Steel)



WARNING
Aluminum housings can be used for pressures up to 210 bar (3000 psi). Steel housings must be used for operating pressures above 210 bar (3000 psi).