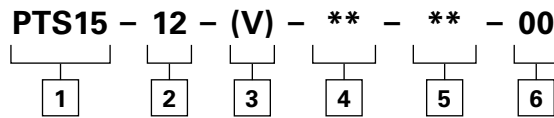


PTS15-12 - Pilot to Shift Valve

Pilot operated, directional control valve
105 L/min (27.7 USgpm) • 350 bar (5000 psi)

Model Code



1 Function
PTS15 - Pilot to shift valve

2 Size
12 - 12 size

3 Seal Material
Blank - Buna-N
V - Viton®

4 Port Size

Code	Port Size	Housing Number	
		Aluminum	Steel
0	Cartridge		
A4G	1/2" BSPP	02-161817	
A6G	3/4" BSPP	02-161816	
A10H	SAE 10	02-160642	
A12H	SAE 12	02-160646	
S8G	1/2" BSPP		02-169814
S10T	SAE 10		02-161070
S12T	SAE 12		02-169816

See section J for housing details.

5 Pilot to shift (nominal)
40 - 2,7 bar (40 psi)

6 Special Features
00 - None
(Only required if valve has special features, omitted if "00".)

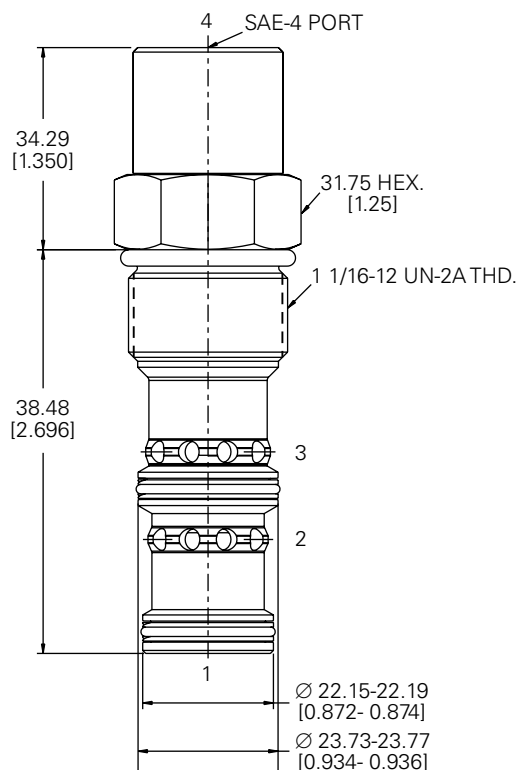
Dimensions

mm (inch)

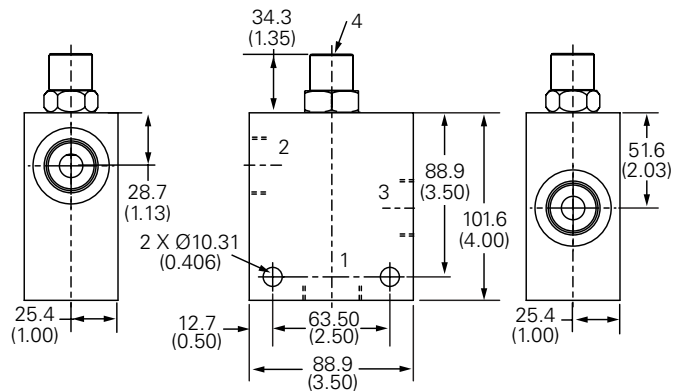
Torque cartridge in aluminum housing
81-93 Nm (60-70 ft lbs)


Torque cartridge in steel housing
102-115 Nm (75-85 ft lbs)

Cartridge Only



Installation Drawing (Steel)

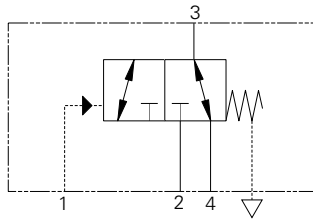


WARNING
 Aluminum housings can be used for pressures up to 210 bar (3000 psi). Steel housings must be used for operating pressures above 210 bar (3000 psi).

PTS5-16 - Pilot to Shift Valve

Pilot operated, directional control valve

132 L/min (35 USgpm) • 210 bar (3000 psi)



Operation

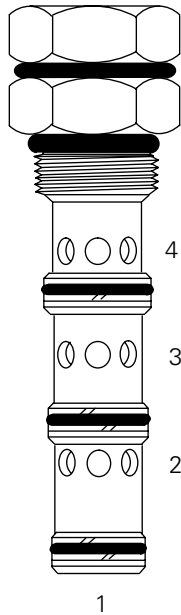
This valve allows flow between ports 3 and 4 while blocking port 2 until sufficient pressure has been applied to port 1 and the spring bias is overcome.

At this time, flow is directed between port 2 and port 3 while blocking port 4. During the cross-over transition, all ports are open. The spring chamber for this valve is externally vented to atmosphere.

Features

Hardened, ground and honed sleeve and spool for low internal leakage.

Sectional View



Performance Data

Ratings and Specifications

Performance data is typical with fluid at 21,8 cSt (105 SUS) and 49°C (120°F)

Typical application pressure (all ports)	210 bar (3000 psi)
Cartridge fatigue pressure (infinite life)	210 bar (3000 psi)
Rated flow	132 L/min (35 USgpm)
Internal leakage	164 cc/min (10 in ³ /min) maximum @ 210 bar (3000 psi)
Temperature range	-40° to 120°C (-40° to 248°F)
Pilot pressures	40 - 2,75 bar (40 psi) 80 - 5,5 bar (80 psi) 160 - 11,0 bar (160 psi)
Pilot displacement volume	1,97 cm ³ (0.12 in ³)
Cavity	C-16-4
Fluids	All general purpose hydraulic fluids such as: MIL-H-5606, SAE 10, SAE 20, etc.
Filtration	Cleanliness code 18/16/13
Standard housing materials	Aluminum
Weight cartridge only	0,5 kg (1.12 lbs)
Seal kit	889634 (Buna-N), 889638 (Viton®)

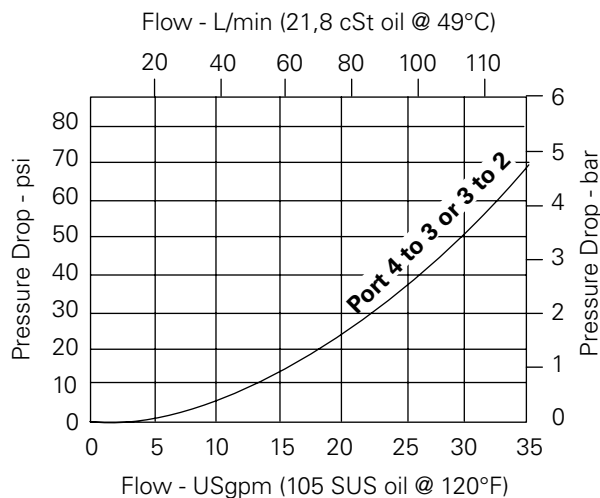
Viton is a registered trademark of E.I. DuPont

Description

This is a 3-way 2 position, pilot operated directional control valve ideal for selecting a function when the pilot pressure is applied or removed.

Pressure Drop Curves

Cartridge only



Where measurements are critical request certified drawings. We reserve the right to change specifications without notice.